

FOR SALE

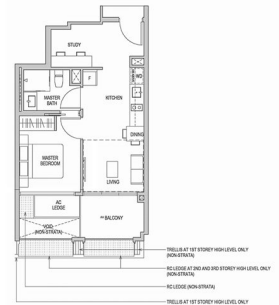
RESIDENTIAL - CONDOMINIUM 560SQFT (52SQM) / CALL FOR PRICE!

+65 9155 3891



1 - Bedroom + Study

TYPE AS1
SQ. SQM: 560 SQFT
BOOK 12 452 07 TO 464 27



INCLUDES 1ST STOREY HIGH LEVEL ONLY (COMMON AREA)
INCLUDES 2ND AND 3RD STOREY HIGH LEVEL ONLY (COMMON AREA)
EXCLUDES COMMON AREA
INCLUDES 1ST STOREY HIGH LEVEL ONLY (COMMON AREA)

RESIDENTIAL - CONDOMINIUM

8,10,12,14 RIFLE RANGE ROAD, CLEMENTI PARK,
UPPER BUKIT TIMAH, SINGAPORE 588376

- LISTING ID: SGLD67326253
- TENURE: LEASEHOLD 99
- TITLE: N/A
- SIZE BUILT-UP: 560SQFT (52SQM)
- SIZE LAND: N/A
- NO. OF FLOORS: 5
- FLOOR/LEVEL: N/A - LOW FLOOR
- BED ROOMS: 1+1
- BATH ROOMS: 1
- MAIDS ROOMS: N/A
- PARKING SPACES: N/A
- LAYOUT TYPE: INTERMEDIATE
- FACING: N/A
- VIEWING: N/A
- SELLING PRICE: **CALL FOR PRICE!**
- COMPLETION YEAR: 2024
- CONDITION: ORIGINAL CONDITION
- FURNISHING: PARTIALLY FURNISHED
- LISTING DATE: MAY 10, 2021

MAYFAIR GARDENS

Condominium for Sale: Partially furnished. 1 bedroom, 1 bathroom. Completed in 2024, this unit is in original condition. Tenure: Leasehold 99 Located in Singapore's district D21 near Clementi Park, Upper Bukit Timah in the area Central West (Central region).

INTERIOR FACILITIES

- Air-Conditioning
- Balcony

EXTERIOR FACILITIES

- 24 Hours Security
- Covered Car Park
- Jacuzzi
- Landscaped Garden

VISIT THIS PROPERTY AT: <https://www.holieng.com/property/SGLD67326253>



LI ENG HO - HUTTONS ASIA PTE LTD

3 Bishan Place #05-01 CPF Bishan Building
D20, 579838, Singapore

+65 9155 3891
WhatsApp Me

holieng59@gmail.com

L3008899K
R007407E

<https://www.holieng.com>



Scan QR Code

Huttons® Call for Viewing
The Agency of Choice +65-91553891